



**smile** knowing your home is protected for a full ten years.

## coverage that gives confidence.

Defining the 2-10 Home Buyers Warranty® Structural Home Warranty.

### 1 YEAR WORKMANSHIP WARRANTY

The 1 year workmanship warranty provides surety coverage from the day of closing. It provides clearly defined construction standards for defects in materials and workmanship for the first year. If the builder defaults on their obligation, the warranty insurer fixes the defect.

What is covered:\*

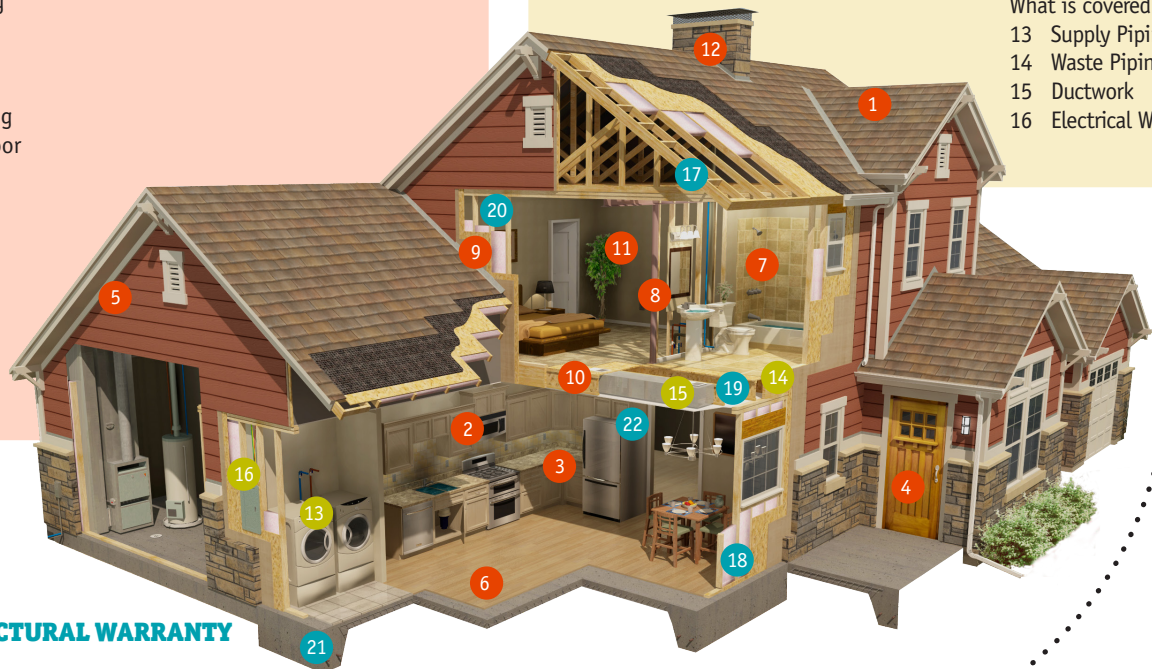
- 1 Roof Covering
- 2 Cabinets
- 3 Countertops
- 4 Door Panels
- 5 Exterior Siding
- 6 Hardwood Floor
- 7 Ceramic Tile
- 8 Drywall
- 9 Interior Trim
- 10 Carpet
- 11 Paint
- 12 Fireplace

### 2 YEAR SYSTEMS WARRANTY

The 2 year systems warranty provides surety coverage from the day of closing. It provides clearly defined construction standards for defects in the distribution of electrical, plumbing and mechanical systems for a full two years. If the builder defaults on their obligation, the warranty insurer fixes the defect.

What is covered:\*

- 13 Supply Piping
- 14 Waste Piping
- 15 Ductwork
- 16 Electrical Wiring



### 10 YEAR STRUCTURAL WARRANTY

The 10 year insurance-backed structural warranty provides 10 full years of coverage for qualified structural defects from the day of closing. It protects designated load-bearing elements of the home caused by failure that affects their load-bearing function to the extent that the home becomes unsafe, unsanitary or otherwise unlivable.

What is covered:\*

- 17 Roof Framing
- 18 Load-Bearing Walls
- 19 Beams
- 20 Columns
- 21 Foundation
- 22 Floor Framing



LONG LIVE HAPPY HOMES®

2-10.com

\*The specific coverages are governed by the warranty booklet provided to the homeowner after closing.